

DRAWING INDEX

DRAWING NUMBER	DESCRIPTION
#LY07-071-00	DRAWING INDEX
#LY07-071-01	3D VIEW
#LY07-071-02	PLAN VIEW
#LY07-071-03	SIDE VIEW
#LY07-071-04	END VIEW
#LY07-071-05	PLUMBING SCHEMATIC
#LY07-071-06	ELECTRICAL LAYOUT
#LY07-071-07	EQUIPMENT LAYOUT
#LY07-071-08	PIPING 3D
#LY07-071-09	CONCRETE LAYOUT
#LY07-071-10	PIT DETAIL

NOTE:
THIS DRAWING AND DESIGN IS THE PROPERTY OF INTERCLEAN EQUIPMENT INC. AND MUST NOT BE COPIED OR USED EITHER DIRECTLY OR INDIRECTLY FOR ANY WORK OTHER THAN THAT OF INTERCLEAN EQUIPMENT INC. WITHOUT SAID COMPANY'S EXPRESSED PERMISSION. ALL RIGHTS OF INVENTION OR DESIGN ARE RESERVED.



InterClean Equipment, Inc.

3939 Bestech Dr
Ypsilanti, MI 48197

Web Site: www.interclean.com
E-mail: sales@mail.interclean.com
Phone: (734) 975-2967
(800) 468-3725
Fax: (734) 975-1646

R.	DATE	DESCRIPTION	BY	APPR
C	01/29/08	PIPING LAYOUT REVISED	SIL	PK
B	12/20/07	PRESSURE WASHER BEEN TAKEN OUT	SIL	PK
A	10/29/07	CONCRETE LAYOUT REVISED	SIL	PK

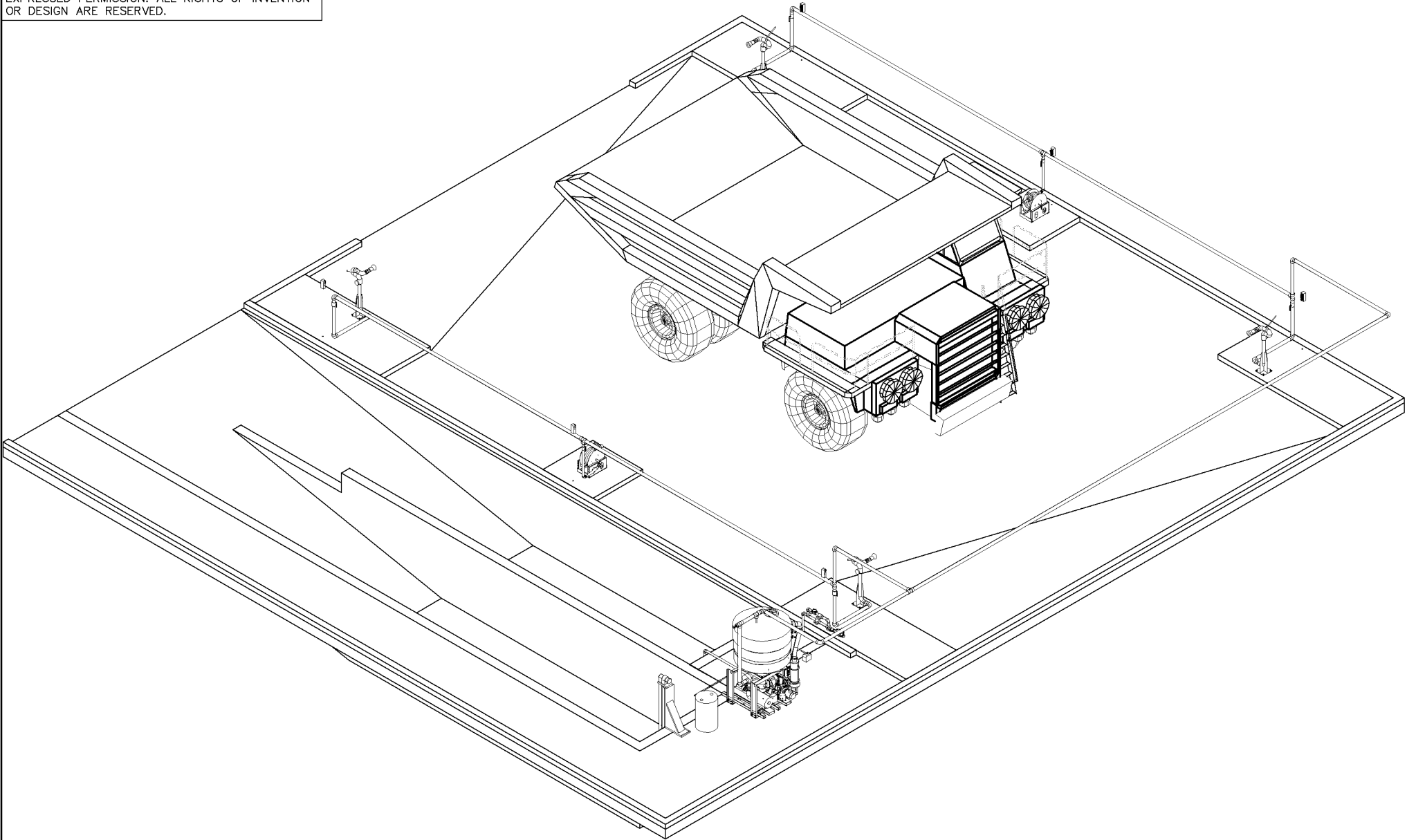
InterClean Equipment, Inc.

DESIGN: SIMON	DRAWN: SIMON
CHECK: PK	APPR: PK
SCALE: No SCALE	

ADANAC M. - RUBY CREEK, BC, CANADA
TRUCK WASH, MANUAL WASH SYSTEM
DRAWING INDEX

DATE: 10/12/07
PART NO: #LY07-071-00
WEIGHT:

NOTE:
 THIS DRAWING AND DESIGN IS THE PROPERTY OF
 INTERCLEAN EQUIPMENT INC. AND MUST NOT BE
 COPIED OR USED EITHER DIRECTLY OR INDIRECTLY
 FOR ANY WORK OTHER THAN THAT OF INTERCLEAN
 EQUIPMENT INC. WITHOUT SAID COMPANY'S
 EXPRESSED PERMISSION. ALL RIGHTS OF INVENTION
 OR DESIGN ARE RESERVED.



OBJECTS\Foreign\Canada\British_Columbia\Ruby_Creek\LY07-071.dwg, 01_3D_1/29/2008 3:37:18 PM, Simon, HPD11055CM.pcs

R.	DATE	DESCRIPTION	BY	APPR
C	01/29/08	PIPING LAYOUT REVISED	SIL	PK
B	10/20/07	PRESSURE WASHER BEEN TAKEN OUT	SIL	PK
A	10/29/07	CONCRETE LAYOUT REVISED	SIL	PK

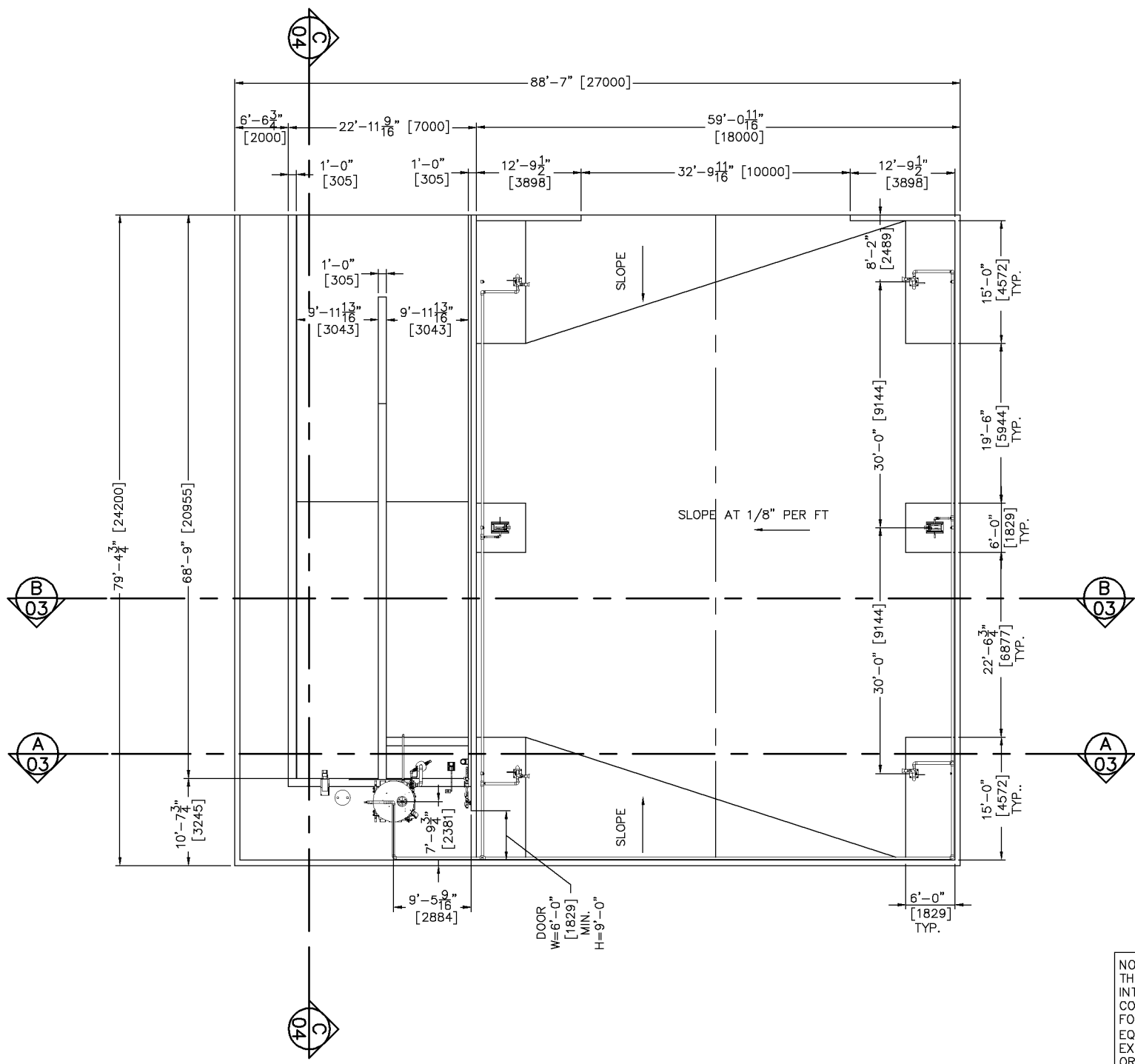
InterClean Equipment, Inc.

DESIGN: DRAWN:
 SIMON SIMON
 CHECK: APPR:
 PK PK
 SCALE:
 NO SCALE

ADANAC M. - RUBY CREEK, BC, CANADA
 TRUCK WASH, MANUAL WASH SYSTEM
 3-D VIEW

DATE:
 10/12/07
 PART NO:
 #LY07-071-01
 WEIGHT:

PROJECT:SI\Foreign\Canada\British_Columbia\Ruby_Creek\LY07-071.dwg, 02_Plan, 1/29/2008 3:37:36 PM, Simon, HPD110550M1.pcs



NOTE:
THIS DRAWING AND DESIGN IS THE PROPERTY OF INTERCLEAN EQUIPMENT INC. AND MUST NOT BE COPIED OR USED EITHER DIRECTLY OR INDIRECTLY FOR ANY WORK OTHER THAN THAT OF INTERCLEAN EQUIPMENT INC. WITHOUT SAID COMPANY'S EXPRESSED PERMISSION. ALL RIGHTS OF INVENTION OR DESIGN ARE RESERVED.

NO.	DATE	DESCRIPTION	BY	APPR
C	01/29/08	PIPING LAYOUT REVISED	CSL	PK
B	12/20/07	PRESSURE WASHER BEEN TAKEN OUT	CSL	PK
A	10/29/07	CONCRETE LAYOUT REVISED	CSL	PK
R				

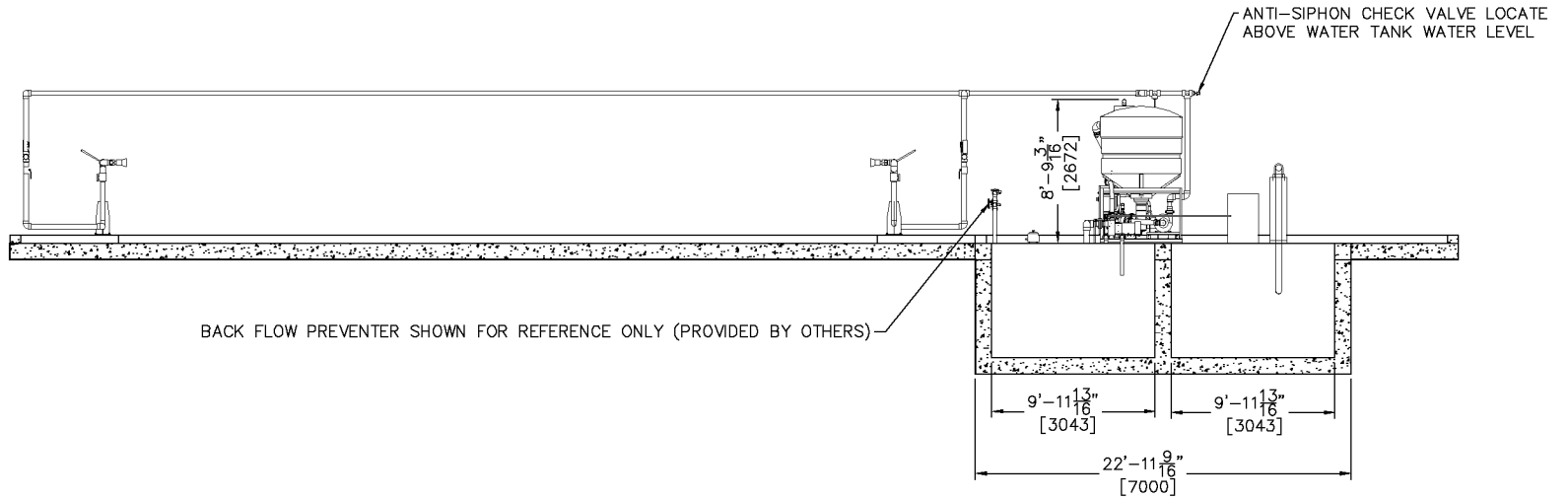
InterClean Equipment, Inc.

DESIGN: SIMON
DRAWN: SIMON
CHECK: PK
APPR: PK
SCALE: 1/8"=1'

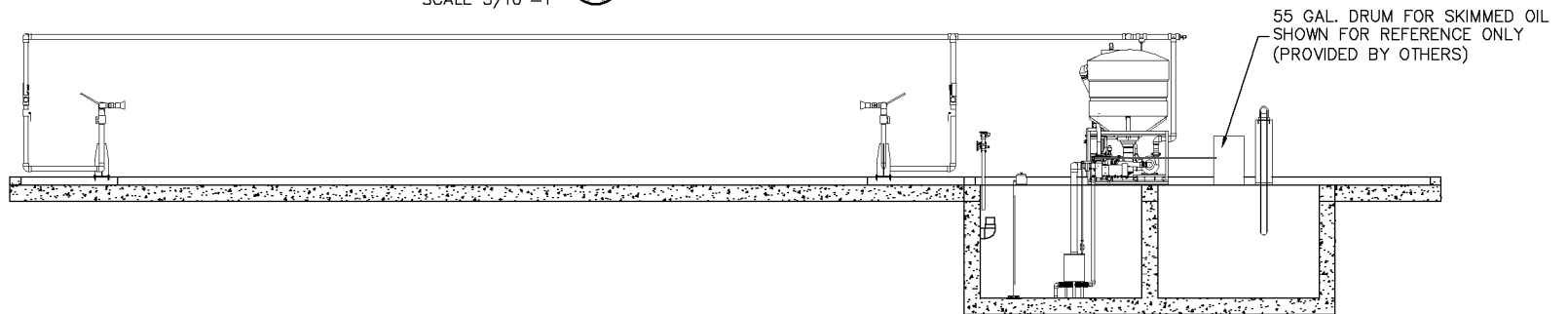
ADANAC M. - RUBY CREEK, BC, CANADA
TRUCK WASH, MANUAL WASH SYSTEM
PLAN VIEW

DATE: 10/12/07
PART NO: #LY07-071-02
WEIGHT:

SECTION **B**
SCALE 3/16"=1'



SECTION **A**
SCALE 3/16"=1'



NOTE:
THIS DRAWING AND DESIGN IS THE PROPERTY OF INTERCLEAN EQUIPMENT INC. AND MUST NOT BE COPIED OR USED EITHER DIRECTLY OR INDIRECTLY FOR ANY WORK OTHER THAN THAT OF INTERCLEAN EQUIPMENT INC. WITHOUT SAID COMPANY'S EXPRESSED PERMISSION. ALL RIGHTS OF INVENTION OR DESIGN ARE RESERVED.

R. DATE	DESCRIPTION	BY	APPR
C 01/29/08	PIPING LAYOUT REVISED	SIL	PK
B 12/20/07	PRESSURE WASHER BEEN TAKEN OUT	SIL	PK
A 11/29/07	CONCRETE LAYOUT REVISED	SIL	PK

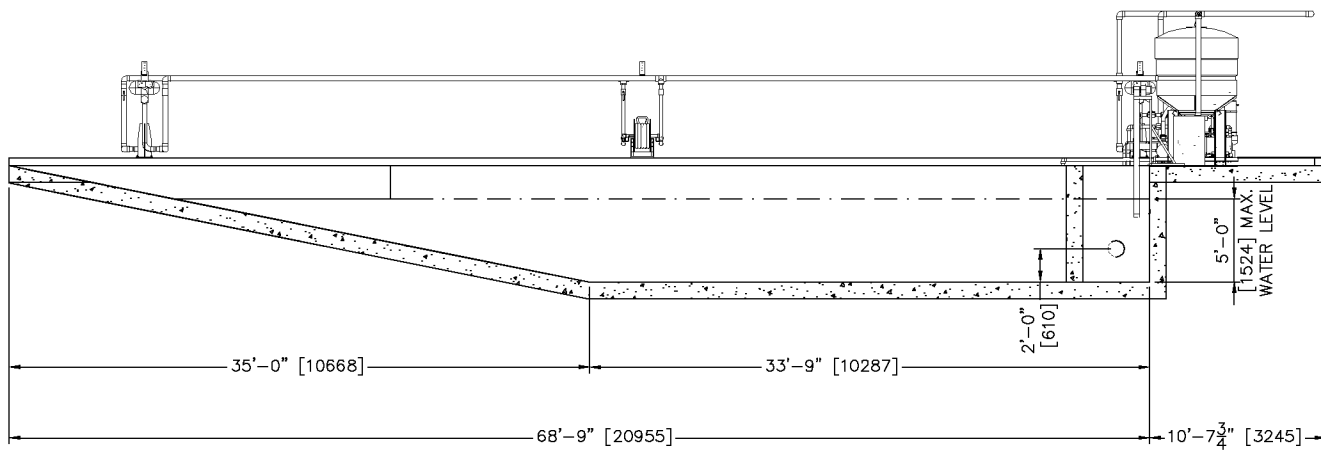
InterClean Equipment, Inc.

DESIGN: DRAWN:
SIMON SIMON
CHECK: APPR:
PK PK
SCALE:
3/16"=1'

ADANAC M. - RUBY CREEK, BC, CANADA
TRUCK WASH, MANUAL WASH SYSTEM
SIDE VIEW

DATE:
10/12/07
PART NO:
#LY07-071-03
WEIGHT:

PROJECT: Foreign/Canada/Brish Columbia/Ruby_Creek/LY07-071.dwg, 04_End, 1/29/2008 3:38:00 PM, Simon, HPD, 1055CM.pc3



SECTION C
SCALE 3/16"=1' 04

NOTE:
THIS DRAWING AND DESIGN IS THE PROPERTY OF INTERCLEAN EQUIPMENT INC. AND MUST NOT BE COPIED OR USED EITHER DIRECTLY OR INDIRECTLY FOR ANY WORK OTHER THAN THAT OF INTERCLEAN EQUIPMENT INC. WITHOUT SAID COMPANY'S EXPRESSED PERMISSION. ALL RIGHTS OF INVENTION OR DESIGN ARE RESERVED.

R.	DATE	DESCRIPTION	BY	APPR
C	01/29/08	PIPING LAYOUT REVISED	SIL	PK
B	10/20/07	PRESSURE WASHER BEEN TAKEN OUT	SIL	PK
A	11/07/07	CONCRETE LAYOUT REVISED	SIL	PK

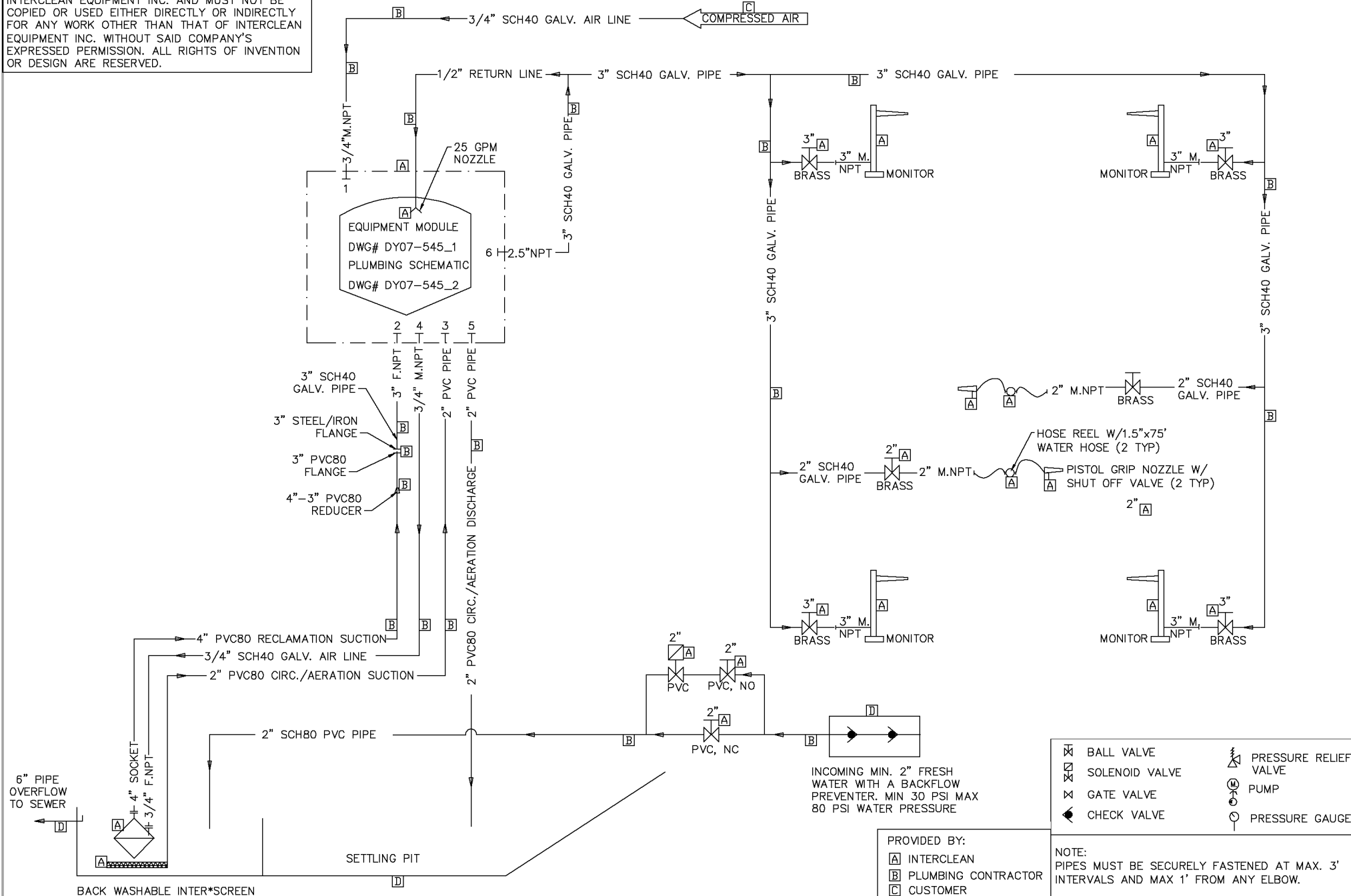
InterClean Equipment, Inc.

DESIGN:	DRAWN:
SIMON	SIMON
CHECK:	APPR:
PK	PK
SCALE:	
3/16"=1'	

ADANAC M. - RUBY CREEK, BC, CANADA
TRUCK WASH, MANUAL WASH SYSTEM
END VIEW

DATE:	10/12/07
PART NO:	#LY07-071-04
WEIGHT:	

NOTE:
THIS DRAWING AND DESIGN IS THE PROPERTY OF INTERCLEAN EQUIPMENT INC. AND MUST NOT BE COPIED OR USED EITHER DIRECTLY OR INDIRECTLY FOR ANY WORK OTHER THAN THAT OF INTERCLEAN EQUIPMENT INC. WITHOUT SAID COMPANY'S EXPRESSED PERMISSION. ALL RIGHTS OF INVENTION OR DESIGN ARE RESERVED.



- BALL VALVE
- SOLENOID VALVE
- GATE VALVE
- CHECK VALVE
- PRESSURE RELIEF VALVE
- PUMP
- PRESSURE GAUGE

NOTE:
PIPES MUST BE SECURELY FASTENED AT MAX. 3' INTERVALS AND MAX 1" FROM ANY ELBOW.
FOR PLUMBING DETAILS, PLEASE REFER TO #LY07-071-08 AND #LY07-071-10

PROVIDED BY:
 [A] INTERCLEAN
 [B] PLUMBING CONTRACTOR
 [C] CUSTOMER
 [D] GENERAL CONTRACTOR
 [E] CHEMICAL SUPPLIER

INCOMING MIN. 2" FRESH WATER WITH A BACKFLOW PREVENTER. MIN 30 PSI MAX 80 PSI WATER PRESSURE

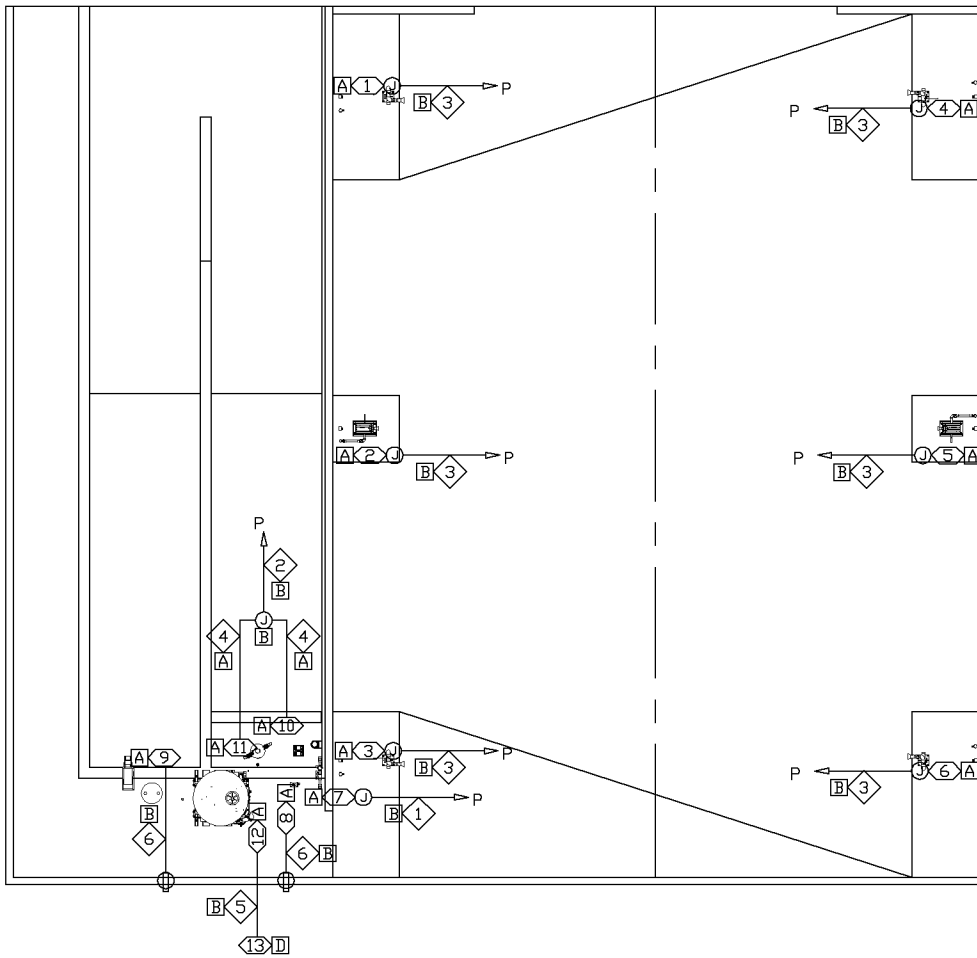
R. DATE	DESCRIPTION	SIL	PK	BY	APPR
C 01/29/08	PIPING LAYOUT REVISED	SIL	PK		
B 10/20/07	PRESSURE WASHER BEEN TAKEN OUT	SIL	PK		
A 10/29/07	CONCRETE LAYOUT REVISED	SIL	PK		

InterClean Equipment, Inc.

DESIGN: DRAWN:
 SIMON SIMON
 CHECK: APPR:
 PK PK
 SCALE:
 NO SCALE

ADANAC M. - RUBY CREEK, BC, CANADA
 TRUCK WASH, MANUAL WASH SYSTEM
 PLUMBING SCHEMATIC
 DATE: 10/12/07
 PART NO: #LY07-071-05
 WEIGHT:

PROJECTS\Foreign\Cana\British_Columbia\Ruby_Creek\LY07-071.dwg, 05 Schematic, 1/29/2008 3:38:08 PM, Simon, HPD11055CM.plt, p.03



- ① REMOTE CONTROL STATION #1, 24 VDC
- ② REMOTE CONTROL STATION #2, 24 VDC
- ③ REMOTE CONTROL STATION #3, 24 VDC
- ④ REMOTE CONTROL STATION #4, 24 VDC
- ⑤ REMOTE CONTROL STATION #5, 24 VDC
- ⑥ REMOTE CONTROL STATION #6, 24 VDC
- ⑦ SOLENOID VALVE, 2", 24 VDC, FOR PIT FILL
- ⑧ AIR PUMP, 120 VAC, 50 RUNNING WATTS, 1 PH
- ⑨ OIL SKIMMER, 115 VAC, 1PH
- ⑩ PIT LOW LEVEL FLOAT SWITCH, 24 VDC, NO, 3" ABOVE INTERSCREEN COVER
- ⑪ PIT FILL LEVEL FLOAT SWITCH, 24 VDC, NC, 1' BELOW FLOOR LEVEL
- ⑫ EQ-MODULE CONTROL PANEL, 575 VAC, 3 PH, FLA 46
- ⑬ FEEDER AND DISCONNECT FOR EQ-CONTROL PANEL, 575 VAC, 3 PH.

PROVIDED BY:

- [A] INTERCLEAN
- [B] ELECTRICAL CONTRACTOR
- [C] CUSTOMER
- [D] GENERAL CONTRACTOR

LEGEND:

- DEVICE
- ⊖ RECEPTACLE, 120V, 20A
- ⊙ JUNCTION BOX
- ◇ BRANCH CIRCUIT/FEEDER
- P CONNECTED TO EQ-MODULE CONTROL PANEL

- ① 2-#16, 24 VDC, 1/2" CONDUIT
- ② 3-#16, 24 VDC, 1/2" CONDUIT
- ③ 8-#16, 24 VDC, 1/2" CONDUIT
- ④ 2-#18, 25' SOOW-FLEXIBLE CORD, COMES W/FLOAT SWITCH
- ⑤ 3-#6, 575 VAC, 1" CONDUIT
- ⑥ FLEXIBLE CORD WITH PLUG, COMES WITH EQUIPMENT

NOTE:

- 1 ALL ELECTRICAL METHODS AND MATERIALS SHALL BE SUITABLE FOR USE IN WET LOCATION PER NEC 310-8, 370-15A, 410-4A, AND ALL APPLICABLE CODES.
- 2 ALL CONDUCTORS SHALL BE THHN AND HAVE TEMPERATURE RATING OF 90 °C (194 F°).
- 3 CONDUITS MAY BE COMBINED TO MINIMIZE RUNS, BUT DO NOT COMBINE AC AND DC CIRCUITS.
- 4 BRANCH CIRCUITS ARE SIZED FOR 500' MAX. RUNS.
- 5 ELECTRICAL CONDUIT AND CONDUCTORS SIZES ARE MINIMUMS REQUIRED BY INTERCLEAN. SIZES MAY BE SUBJECT TO CHANGE PER CODES AND REGULATIONS.
- 6 MINIMUM SIZE FEEDER AMPACITY PER NEC 215-2(b)(C)

C	01/29/08	PIPING LAYOUT REVISED	SIL
B	10/20/07	PRESSURE WASHER BEEN TAKEN OUT	SIL KM
A	10/29/07	CONCRETE LAYOUT REVISED	SIL
R	DATE	DESCRIPTION	BY APPR

InterClean Equipment, Inc.

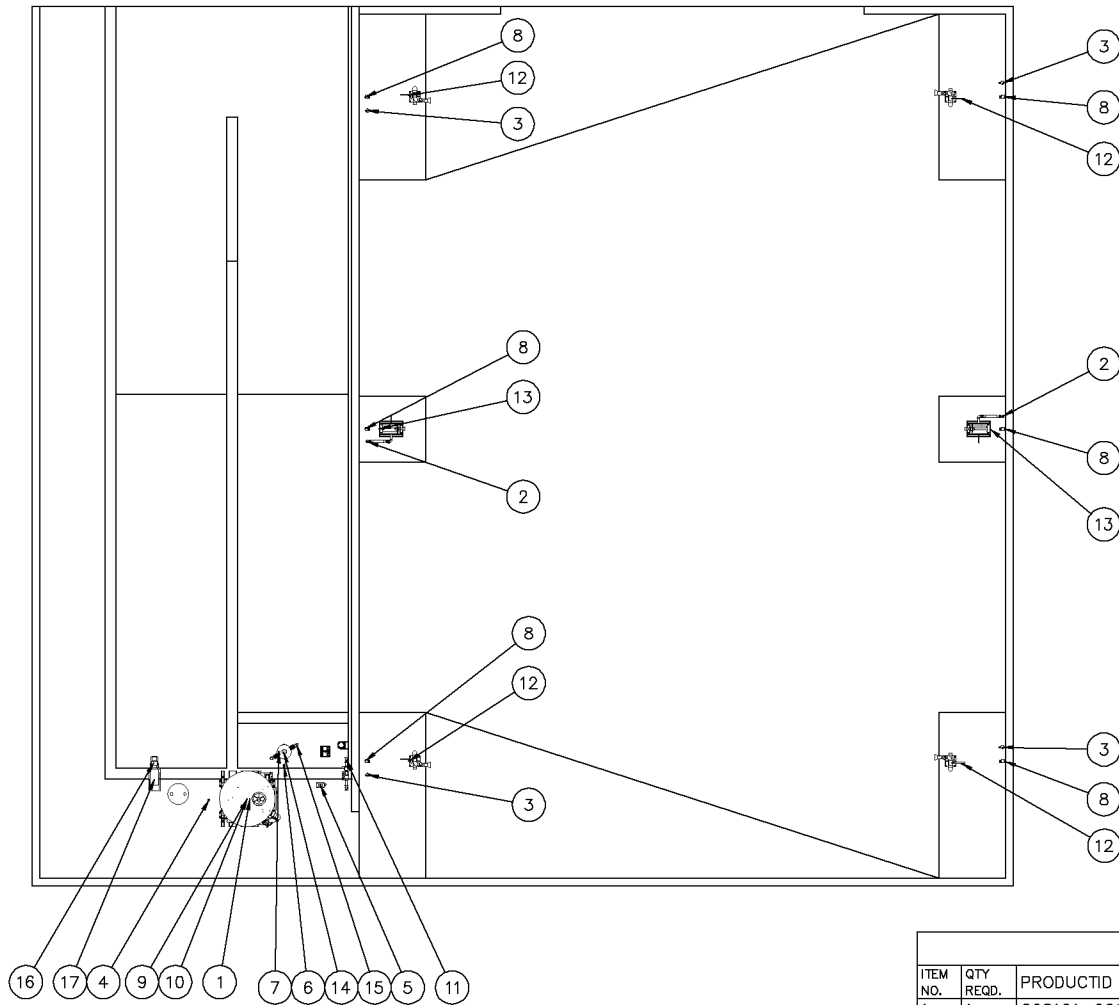
DESIGN: DRAWN:
SIMON SIMON
CHECK: APPR:
888 888
SCALE:
1/8"=1'

ADANAC M. - RUBY CREEK, BC, CANADA
TRUCK WASH, MANUAL WASH SYSTEM
ELECTRICAL LAYOUT

DATE:
10/12/07
PART NO:
#LY07-071-06
WEIGHT:

NOTE:
THIS DRAWING AND DESIGN IS THE PROPERTY OF INTERCLEAN EQUIPMENT INC. AND MUST NOT BE COPIED OR USED EITHER DIRECTLY OR INDIRECTLY FOR ANY WORK OTHER THAN THAT OF INTERCLEAN EQUIPMENT INC. WITHOUT SAID COMPANY'S EXPRESSED PERMISSION. ALL RIGHTS OF INVENTION OR DESIGN ARE RESERVED.

NOTE:
ITEMS SPECIFIED AND DETAILS INDICATED MAY BE SUBJECT TO SUPERSEDING PER LOCAL CODES AND REGULATIONS



BILL OF MATERIALS FOR LY07-071

ITEM NO.	QTY REQD.	PRODUCTID	PRODUCTNAME	DRAWINGFILENAME
1	1	C62101-00165	Nozzle, Veejet Spray, 1/2" NPT, U-H, 00165, SS	C62101-00165
2	2	CO2211-2	Valve, Ball, 2", NPT, Brass, Webstone #41707	CO2211-2
3	4	CO2211-3	Valve, Ball, 3", NPT, Bronze	CO2211-3
4	1	CO2231-050	Valve, Swing Check, Bronze, 300 psi, 1/2"	CO2231-050
5	1	CO343-01	Air Pump, Aeration Sys w/Diffuser ass'y, 115v, Aquatic #KPA1-2	CO343-01
6	1	COB121-02	Float Level Switch, Pit fill, red, NC, 25', #2901-B1-S1-C1-25	COB121-02
7	1	COB122-01	Float Level Switch, Pit low, yellow, NO, 25', #2900-B1-S1-C1-25	COB122-01
8	6	#DY04-206_1	Remote Control Station, 24VDC, w/Pilot Light, for Manual Wash	COc4712-07
9	1	#DY07-545_1	EQ-Module Ass'y, 30Hp, 575V, w/Bio-Remediation Sys.	EM16222-01
10	1	#DY04-033_1	PH-Control System Ass'y, EQ-Module Mount	EM91-00
11	1	#DY07-006_1	Pit Fill Pipe Ass'y, w/2x2" Ball Valves & 2" Solenoid Valve	EMa1-05
12	4	#DY06-365_1	Monitor Ass'y, Floor Mnt, w/2 1/2" Tri-Flo Nozzle	HA19212-00
13	2	#DY07-505_1	Washman & Manual Reel Ass'y, 1.5"x75', w/o Control Station	HA193112-03
14	1	#DY06-130_1	InterScreen, SS, Weld, H=2'-11", 4" NPT Outlet, 0.015" Slot	IS232-00
15	1	#DY00-133_1	Intake Pipe, Field Ass'y, 2" SCH 80 PVC, 100 Holes	IS42-00
16	1	WAa21-01	Oil Skimmer, Abanaki Tote-It BT4p-0090. Belt(c-c)7'-6"x4", 1hp	WAa21-01
17	1	WAa22-00	Mounting Stand, for Oil Skimmer, Abanaki, Toet-It	WAa22-00

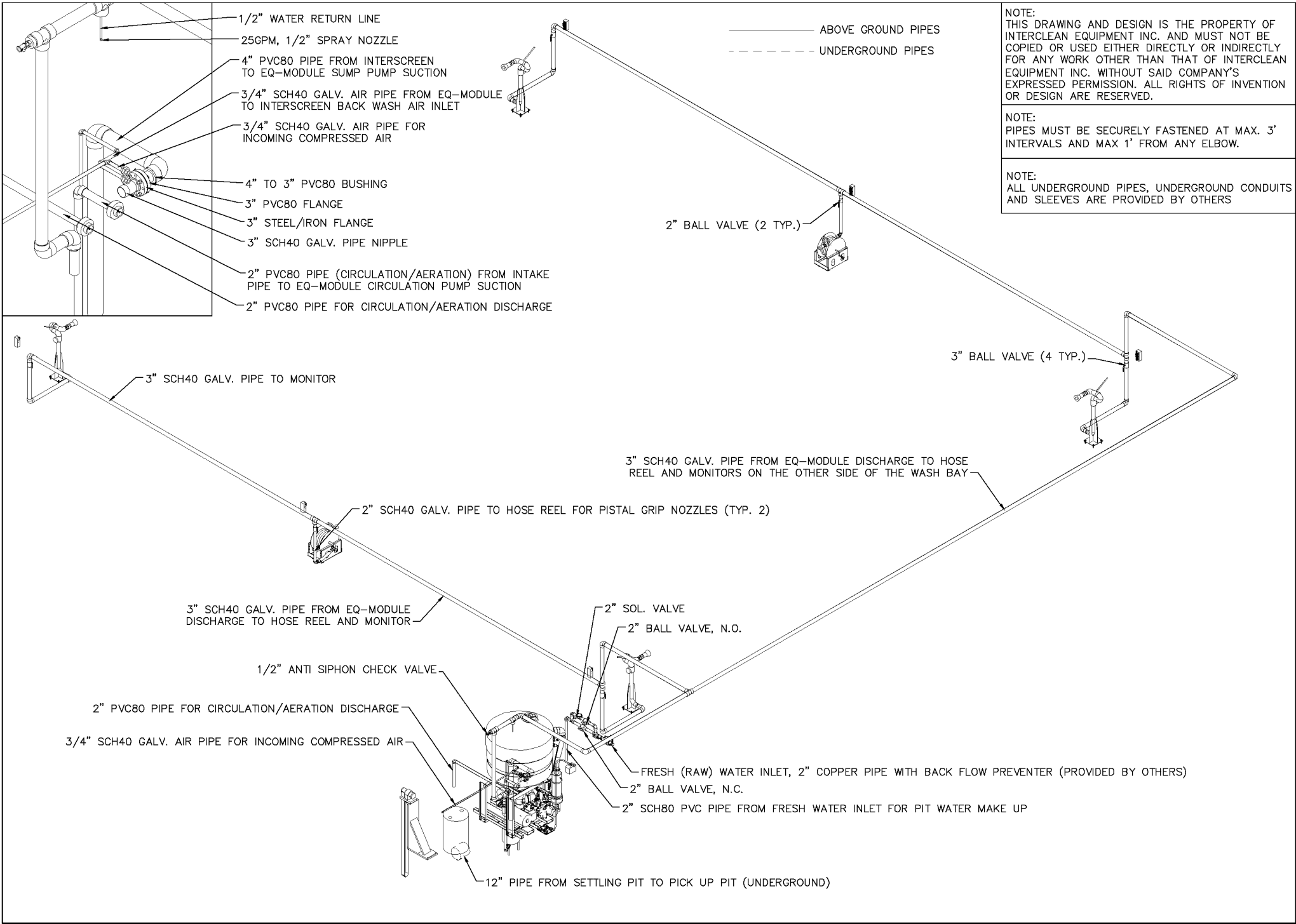
R. DATE	DESCRIPTION	SIL	PK	BY	APPR
C 01/29/08	PIPING LAYOUT REVISED	SIL	PK		
B 12/20/07	PRESSURE WASHER BEEN TAKEN OUT	SIL	PK		
A 11/07/07	CONCRETE LAYOUT REVISED	SIL	PK		

InterClean Equipment, Inc.

DESIGN: SIMON
DRAWN: SIMON
CHECK: APPR:
PK PK
SCALE: 1/8"=1'

ADANAC M. - RUBY CREEK, BC, CANADA
TRUCK WASH, MANUAL WASH SYSTEM
EQUIPMENT LAYOUT

DATE: 10/12/07
PART NO: #LY07-071-07
WEIGHT:



NOTE:
THIS DRAWING AND DESIGN IS THE PROPERTY OF INTERCLEAN EQUIPMENT INC. AND MUST NOT BE COPIED OR USED EITHER DIRECTLY OR INDIRECTLY FOR ANY WORK OTHER THAN THAT OF INTERCLEAN EQUIPMENT INC. WITHOUT SAID COMPANY'S EXPRESSED PERMISSION. ALL RIGHTS OF INVENTION OR DESIGN ARE RESERVED.

NOTE:
PIPES MUST BE SECURELY FASTENED AT MAX. 3' INTERVALS AND MAX 1' FROM ANY ELBOW.

NOTE:
ALL UNDERGROUND PIPES, UNDERGROUND CONDUITS AND SLEEVES ARE PROVIDED BY OTHERS

PROJECT: Foreign (Canada) British Columbia (Rubby Creek) LY07-071.dwg, 08_3D Piping, 1/29/2008 3:38:30 PM, Simon, HPDI1055CM.pc3

R. DATE	DESCRIPTION	BY	APPR
C 01/29/08	PIPING LAYOUT REVISED	SIL	PK
D 12/20/07	PRESSURE WASHER BEEN TAKEN OUT	SIL	PK
A 10/29/07	CONCRETE LAYOUT REVISED	SIL	PK

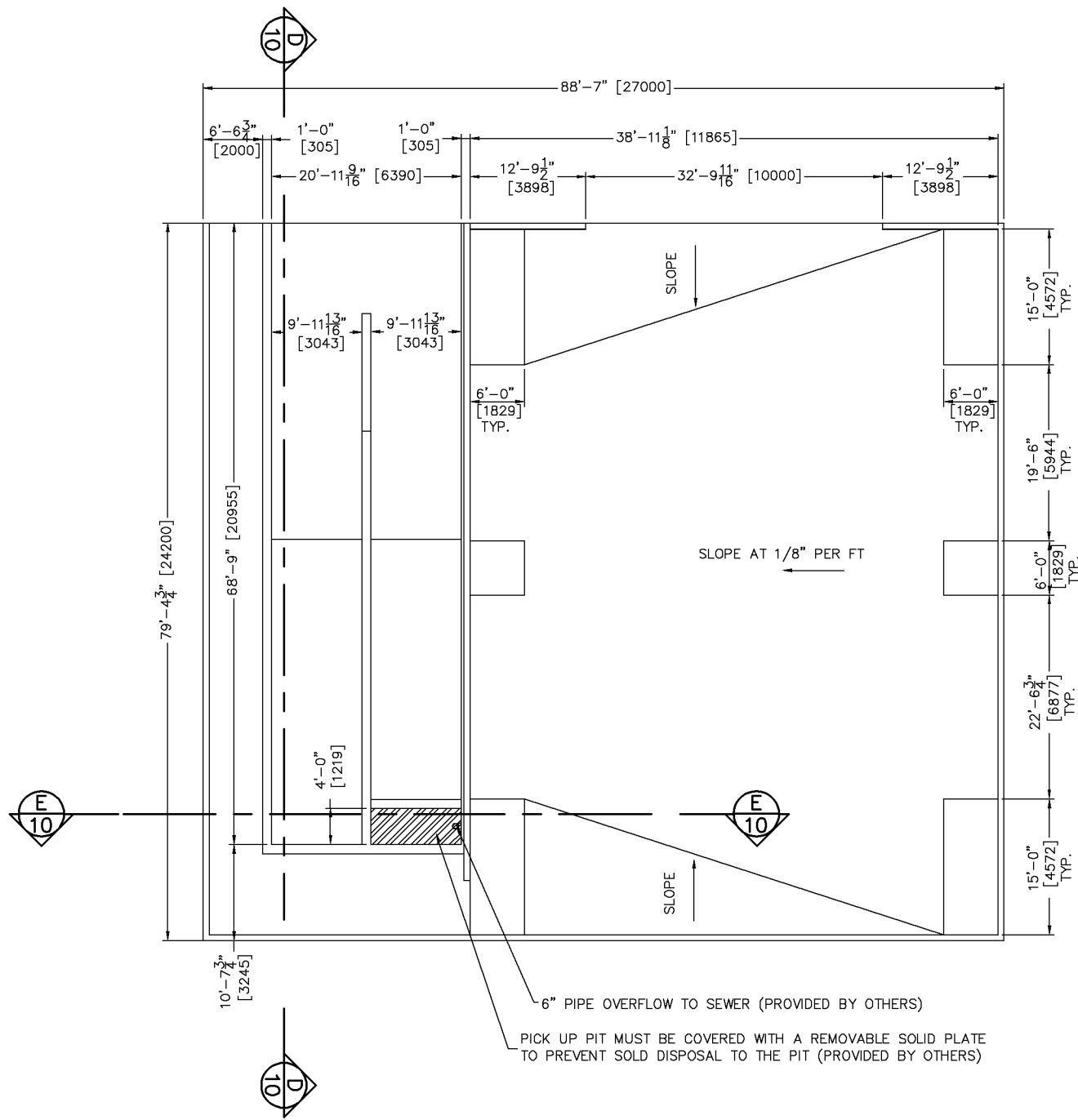
InterClean Equipment, Inc.

DESIGN: SIMON	DRAWN: SIMON
CHECK: PK	APPR: PK
SCALE: NO SCALE	

ADANAC M. - RUBY CREEK, BC, CANADA
TRUCK WASH, MANUAL WASH SYSTEM
PIPING 3D

DATE: 10/12/07
PART NO: #LY07-071-08
WEIGHT:

NOTE:
 THE WASH SYSTEM TEMPERATURE REQUIRED:
 WASH BAY: MIN. 33°F
 EQUIPMENT ROOM: MIN. 33°F, MAX. 90°F



NOTE:
 THIS DRAWING AND DESIGN IS THE PROPERTY OF
 INTERCLEAN EQUIPMENT INC. AND MUST NOT BE
 COPIED OR USED EITHER DIRECTLY OR INDIRECTLY
 FOR ANY WORK OTHER THAN THAT OF INTERCLEAN
 EQUIPMENT INC. WITHOUT SAID COMPANY'S
 EXPRESSED PERMISSION. ALL RIGHTS OF INVENTION
 OR DESIGN ARE RESERVED.

PROJECT: Foreign/Canada/Brishby_Creek/LL107-071.dwg, 09_Concrete, 1/29/2008 3:38:48 PM, Simon, HPD/1056CM.pc3

R. DATE	DESCRIPTION	BY	APPR
C 01/29/08	PIPING LAYOUT REVISED	SIL	PK
B 12/20/07	PRESSURE WASHER BEEN TAKEN OUT	SIL	PK
A 11/07/07	CONCRETE LAYOUT REVISED	SIL	PK

InterClean Equipment, Inc.

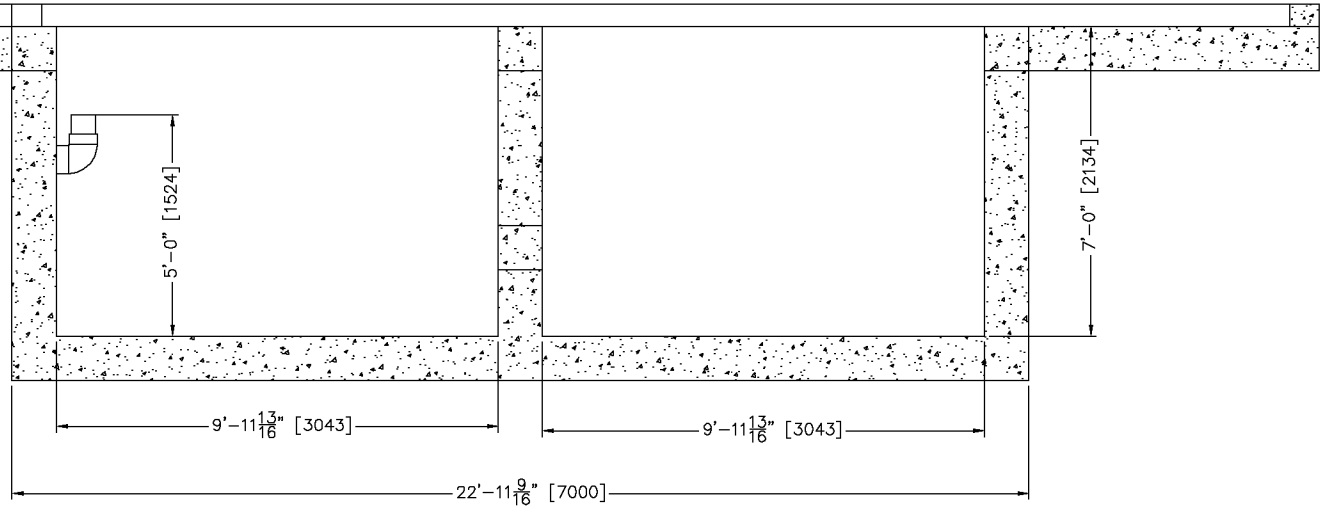
DESIGN: DRAWN:
 SIMON SIMON
 CHECK: APPR:
 PK PK
 SCALE:
 1/8"=1'

ADANAC M. - RUBY CREEK, BC, CANADA
 TRUCK WASH, MANUAL WASH SYSTEM
 CONCRETE LAYOUT

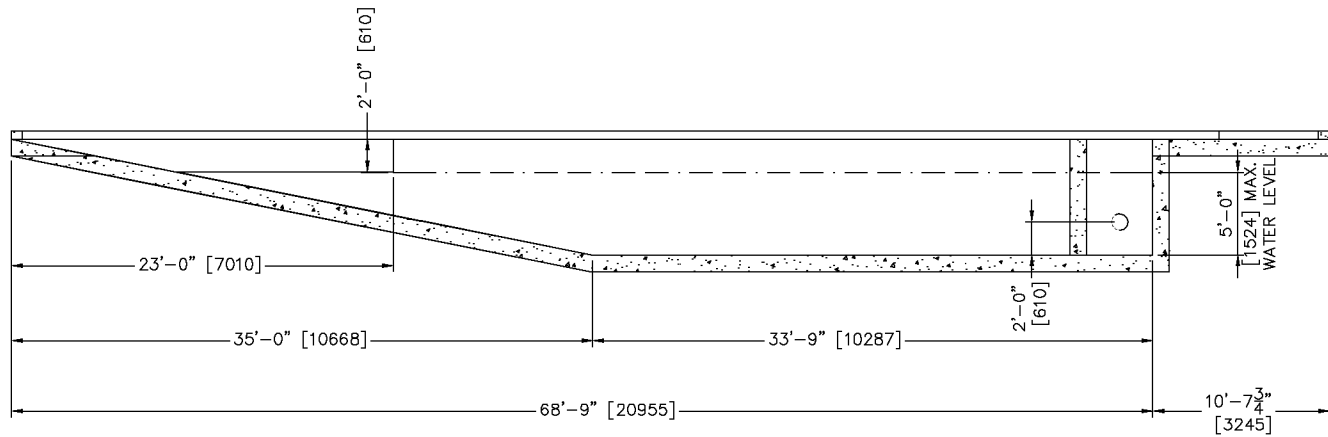
DATE:
 10/12/07
 PART NO:
 #LY07-071-09
 WEIGHT:

NOTE:
THIS DRAWING AND DESIGN IS THE PROPERTY OF INTERCLEAN EQUIPMENT INC. AND MUST NOT BE COPIED OR USED EITHER DIRECTLY OR INDIRECTLY FOR ANY WORK OTHER THAN THAT OF INTERCLEAN EQUIPMENT INC. WITHOUT SAID COMPANY'S EXPRESSED PERMISSION. ALL RIGHTS OF INVENTION OR DESIGN ARE RESERVED.

SECTION **E**
SCALE 1/2"=1'
10



SECTION **D**
SCALE 3/16"=1'
10



NOTE:
THE SUMP PUMP AND CIRCULATION /AERATION SUCTION PIPELINES TO BE LOCATED UNDER THE PIT WATER LEVEL FOR FULL LENGTH

NOTE:
ALL UNDERGROUND PIPES, UNDERGROUND CONDUITS AND SLEEVES ARE PROVIDED BY OTHERS

R. DATE	DESCRIPTION	SIL	PK	BY	APPR
C 01/29/08	PIPING LAYOUT REVISED	SIL	PK		
D 12/20/07	PRESSURE WASHER BEEN TAKEN OUT	SIL	PK		
D 10/29/07	CONCRETE LAYOUT REVISED	SIL	PK		

InterClean Equipment, Inc.

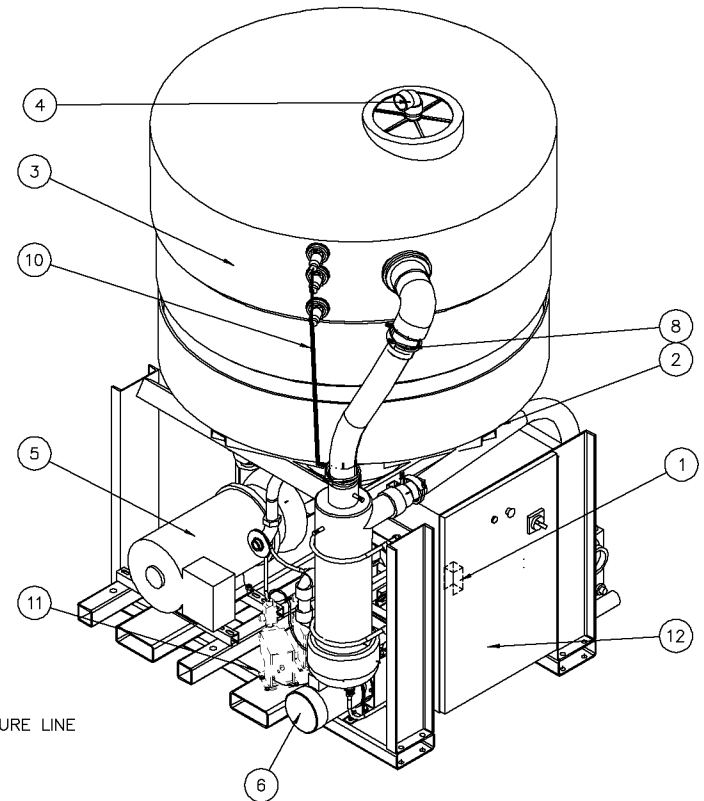
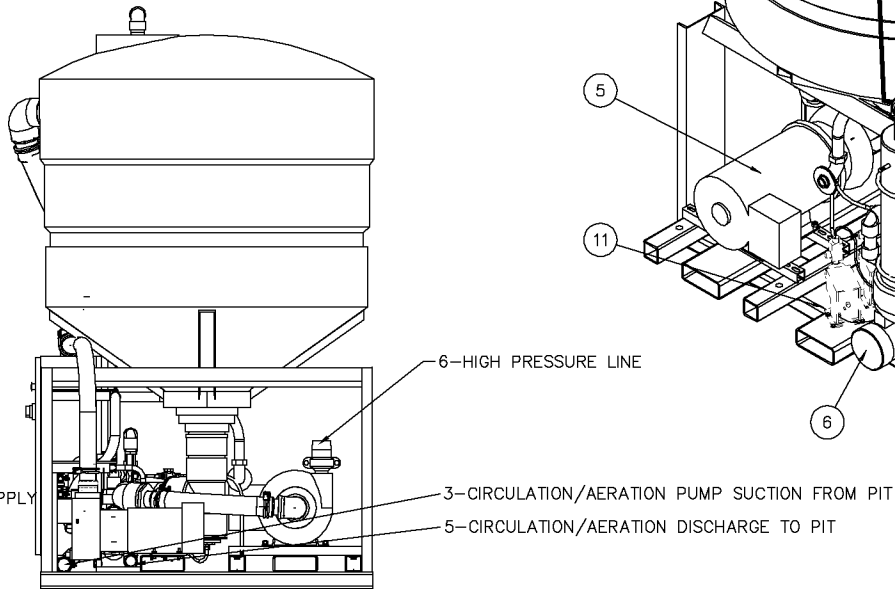
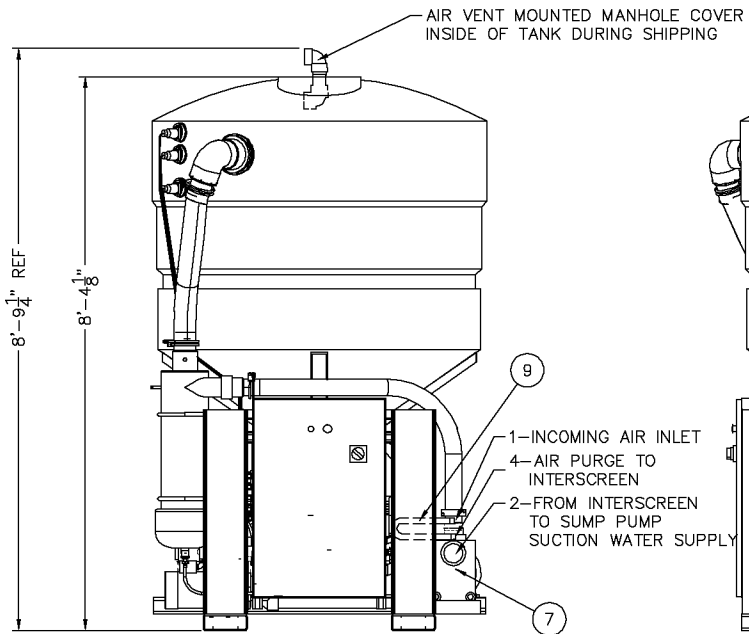
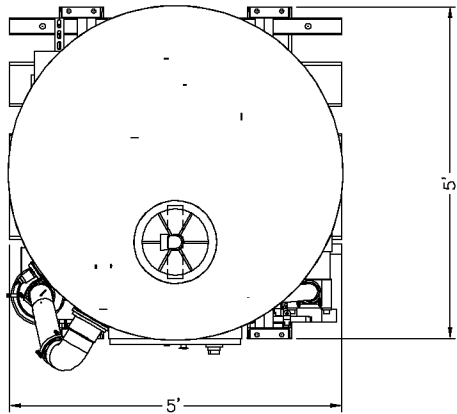
DESIGN: SIMON
DRAWN: SIMON
CHECK: PK
APPR: PK
SCALE: XX

ADANAC M. - RUBY CREEK, BC, CANADA
TRUCK WASH, MANUAL WASH SYSTEM
PIT DETAIL

DATE: 10/12/07
PART NO: #LY07-071-10
WEIGHT:

BILL OF MATERIALS FOR EM16222-01

ITEM NO.	QTY REQD.	PRODUCTID	PRODUCTNAME	DRAWINGFILENAME
1	1	COc19134-00	OverLoad, 30-50 Amps, # GV7RE50, SQD	COc19134-00
2	1	#DY01-305_1	Panel Support Ass'y, EQ-Frame Mnt, Panel Size: H36"xL24"xW10"	EM221-00
3	1	#DY03-001_1	Tank w/Base Frame, 500 Gal. Cone Bottom Tank	EM311-00
4	1	#DY03-193_1	Air Vent Assembly, 2" PVC 80	EM332-01
5	1	#DY07-544_1	Pump, Base Frame Mnt, 30Hp, 575V, 60Hz, w/Pipes&Fittings	EM4116222-01
6	1	#DY04-111_1	Pump, Circ., Base Frame Mnt, 2Hp, 575v, w/Pipes & Fittings	EM421122-00
7	1	#DY04-110_1	Pump, Sump, Base Frame Mounted, 7.5 Hp, 575V, 60Hz	EM431122-00
8	1	#DY03-039_1	Cyclonic Separator Assembly, w/Suction and Discharge Lines	EM51-00
9	1	#D97432_1	Air Purge Line Ass'y, 3/4" Galv. Pipe w/a Solenoid Valve	EM6111-00
10	1	#DY03-200_1	Electrical Accessory Ass'y, EQ-Module, w/Bio-Re. System	EM71-03
11	1	#DY04-036_1	Bioremediation Sys. 115V Flocculent Pump, EQ-Module Frame M'nt	EM82-00
12	1	#DY04-139_1	Slave Panel, Reclaim, 60Hz, 575V, Type A, #AT3052815659A	PA2111221-00



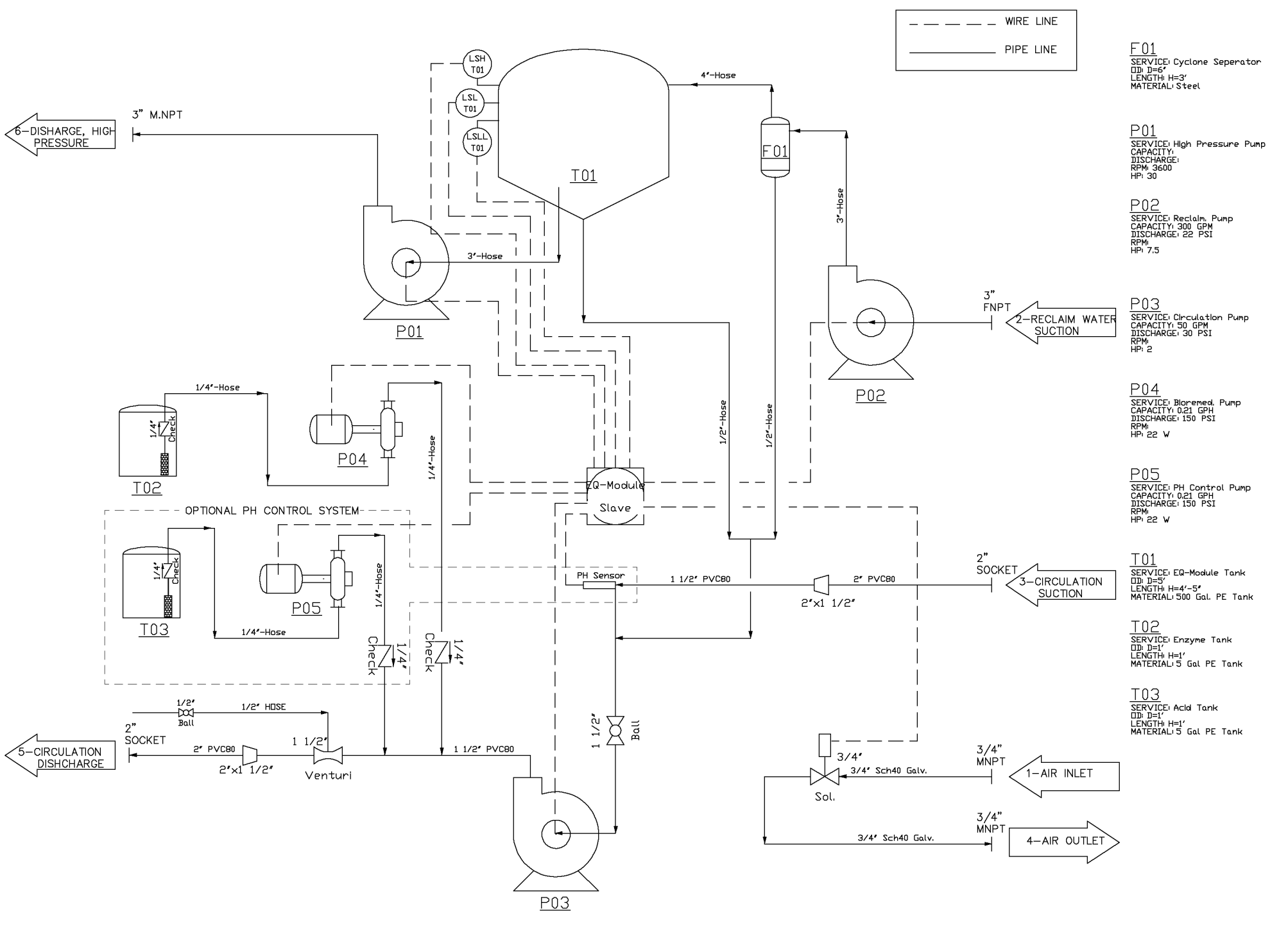
R.	DATE	DESCRIPTION	BY	APPR

InterClean Equipment, Inc.

DESIGN: SIMON
 CHECK: SIMON
 SCALE: 3/4"=1'

EQ-MODULE ASS'Y
 30HP, 575V, w/BIO-REMEDIATION SYS.
 EM16222-01

DATE: 10/16/07
 PART NO: DY07-545_1
 WEIGHT:



R.	DATE	DESCRIPTION	BY	APPR

InterClean Equipment, Inc.

DESIGN: SIMON
 DRAWN: SIMON
 CHECK: APPR:
 SCALE: No SCALE

EQ-MODULE PLUMBING SCHEMATIC
 30HP, 575V, w/BIO-REMEDIATION SYS.
 EMI6222-01

DATE: 10/16/07
 PART NO: DY07-545_2
 WEIGHT: